



MECON IN POWER

MECON IN POWER

MECON, India's frontline Engineering, Consultancy and Contracting organization has contributed significantly to the development of POWER sector in India. MECON is one of the India's best equipped organizations for rendering its services from Concept to commissioning for Captive as well as Utility Power Plant. With a combined force of 70 technologist comprising of Mechanical, Electrical and Control & Instrumentation Engineers supported by around 200 Engineers from other disciplines like Civil Engineering, Structural Engineering, Coal Handling, Water Supply & Treatment facility, Industrial Safety, Technoeconomics, Environmental Engineering, Project Planning & Monitoring, QA & Inspection Services, etc., MECON is capable of providing engineering & consultancy services for power projects of any type, size and technology.

FIELDS OF MECON'S EXPERTISE / ACTIVITIES

Thermal Power Plant

- Conventional (Coal / Lignite / Gas / Oil fired) Power Plant
- Combined cycle / Integrated Gasification Combined Cycle Power Plant
- DG Station based Power Plant
- Waste Heat Recovery Power Plant

Non Conventional Power Plant

- Biomass based Power Plant
- Bagasse Cogeneration based power Plant
- Solar Energy based Power Plant

Hydel Power Plant

- Large/Medium Hydro electric power projects (Storage based and Run of River schemes)
- Micro, Mini & Small Hydro electric power projects (Canal Drop and Hill based schemes)

RM & U of Thermal as well as Hydel Power Plant

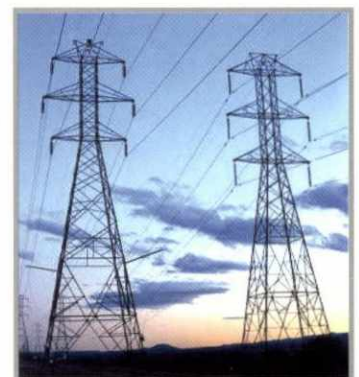
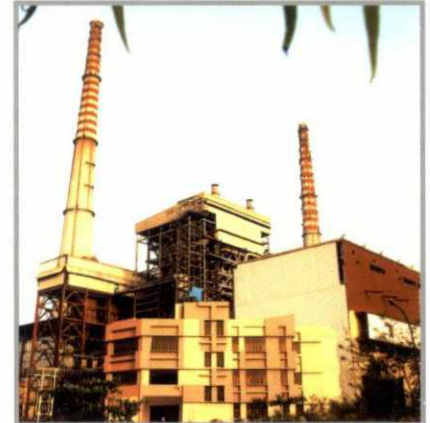
- Conducting RLA & LE Studies
- Preparation of Condition Assessment Report
- Preparation of Detailed Project Report (DPR) for RM & U scheme
- Implementation of RM & U Scheme

RANGE OF SERVICES

- Concept Planning & Site Identification / Selection Studies
- Lender's Engineering Services
- Pre Feasibility / Feasibility Report (PFR / FR)
- Detailed Project Reports (DPR).
- Site Survey, Soil Investigation, EIA / EMP studies (Including TOR) / Infrastructure Planning, etc.
- Assistance in obtaining project related clearances
- Basic Engineering
- Procurement services including tender preparation, evaluation of bid, recommendation & assistance in contract finalization.
- Detailed engineering services including drawing / document review, interface engineering systems, plant and equipment layout development, engineering for balance of plant system like Coal Handling Plant, Ash Handling Plant, DM Plant, CW System, Piping, Plant Electrics, Switchyard, etc. Design & preparation of Civil and Structural drawings, Cable Engineering & Layout, etc.
- Project management & designer's supervision services
- Inspection & expediting services
- Commissioning and post commissioning assistance
- RLA & LE Studies, RM&U recommendation, Implementation consultancy for RM&U schemes
- Asset evaluation

MAJOR COMMISSIONED / COMPLETED PROJECTS IN GENERATION SECTOR

- 2 x 120 MW Expansion of CPP for NALCO at Angul, Orissa
- 1 X 300 MW CPP for JSW Steel Ltd. at Torangallu
- 62 MW Co-Generation Combined Cycle PP for NINL at Duburi
- 2 X 210 MW Extension of TPS – 1 for Neyveli Lignite Corporation at Neyveli
- 50 MW Gas Turbine Based Co-Generation Plant for HPCL at Vizag
- 144 MW Power Plant for Bhushan Steel & Strips Ltd. in Orissa
- Captive Power Plants /Turbo Blower Stations of Varying Capacities for different units of SAIL, NINL, NALCO, JSPL(R), BALCO, etc.
- Expansion of SPP Project for NALCO at Damanjodi
- 1 X 850 KW Korba Mini Hydel Project (Unit-2) of CSEB



- RM&U of Units 5 & 6 (2 X 37.5 MW) of Hirakud Hydel Power Plant of OHPC
- RM&U of Units 3 & 4 (2 X 24 MW) of Hirakud Hydel Power Plant of OHPC
- Turnkey Execution of Civil & Hydro – Mechanical Works of 3 X 4 MW SERLUI – B SHP at Mizoram for P&E Department, Govt of Mizoram
- R & M, Augmentation, SCADA for Jaldhaka Hydel Power Plant WBSEDCL
- Review of DPR for 3 X 20 MW MATNAR HPP of CSEB
- Preparation of PFR for 3 X 20 MW Kanhar Hydel Power Project of CSEB
- Review of DPR of 3 X 16 MW Saurashtra Branch Canal SHPS of SSNNL
- Preparation of DPR for 3 X 10 MW SHPS of Kacchh Branch Canal of SSNNL

MAJOR ON GOING PROJECTS IN GENERATION SECTOR

- 1x250 MW CPP for NSPCL, Rourkela
- 2 X 500 MW NLC Tamilnadu Power Project at Tuticorin
- 1 X 250 MW (CFBC Technology) Lignite Based Thermal Power Plant at Bithnok near Bikaner Rajasthan
- Capacity Expansion BPSCL Project, Bokaro (1 x 300 tph boiler & 36 MW BPTG)
- CPPs of Various units of SAIL, NMDC and other Steel Plants
- R & M of Unit-3 (24 MW) of Chiplima Power House of OHPC
- R & M of Unit-1 to 6 (6 X 60 MW) of Balimela Power House of OHPC
- R M & U of one Unit of 3 X 12 MW Moyar Power House of TANGEDCO
- TEFR for 4800 MW Gas Based Combined Cycle Power Project in Nigeria

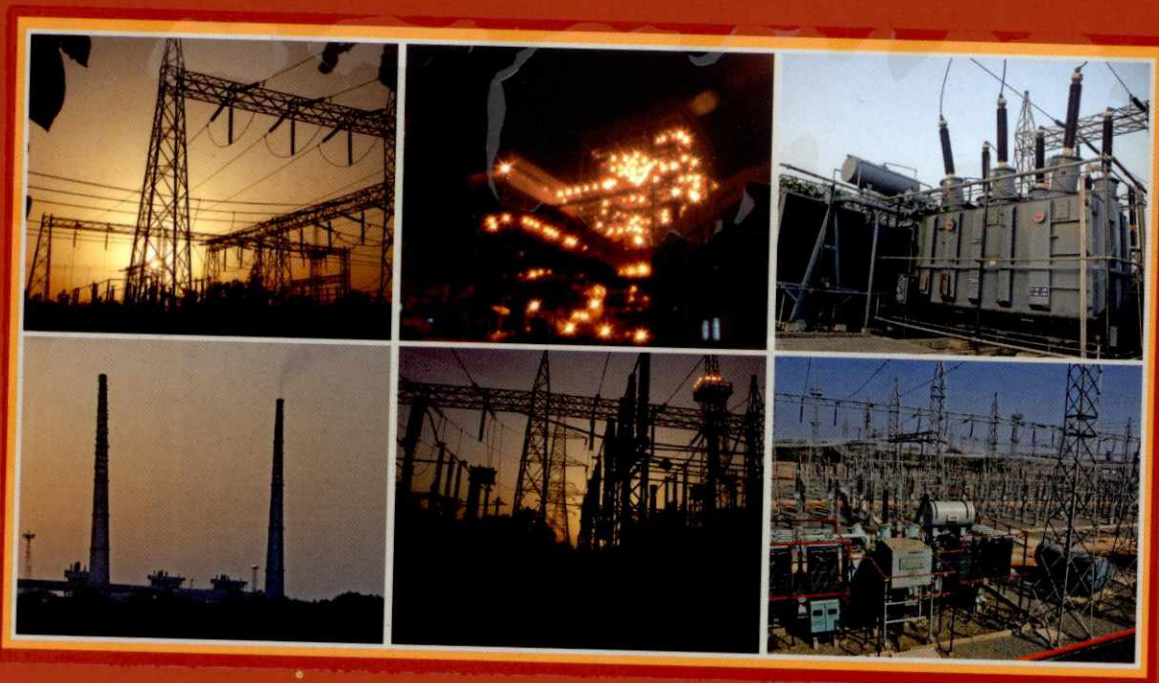
KEY RECOGNITIONS / MoUs

- Empanelled with MoP & PFC for R & M
- Possess MoEF Certified In-House Laboratory
- MoU with Af-Consult, Finland for Providing consultancy services for large unit size power stations like 660 MW, 800 MW & 1000 MW including Supercritical & CFBC Technology based Power Plant and large capacity combined cycle power plant with water/air cooled condenser
- MoU with M/s Verkis, Iceland for providing consultancy services for Hydro Power Projects
- Accredited as "Well Known Remanent Life Assessment Organization" by Central Boiler Board
- MoU with WAPCOS Limited for providing consultancy services for Hydro Power Project
- Certified by MOE&F for carrying out EIA / EMP Studies in 16 sectors including Thermal Power Plants

OUR MAJOR CLIENTS

- NEYVELI LIGNITE CORPORATION
- POWER FINANCE CORPORATION
- CSEB
- DVC
- IPGCL
- OHPC
- NALCO
- MAHA GENCO
- HPCL
- SAIL
- Monnet Ispat
- GAIL
- NSPCL
- BPSCL
- NMDC
- JINDAL GROUP
- BHUSHAN GROUP
- RAMSWAROOP GROUP
- WBPDC, WBSEDCL
- RAJASTHAN, UTTAKHAND, BIHAR, TAMILNADU, JHARKHAND, MANIPUR, ORISSA, UTTAR PRADESH, SIKKIM & MIZORAM STATE UTILITIES & MANY OTHERS





MECON LIMITED

(A Govt. of India Enterprise)

Head office :

Vivekanand path, Doranda, Ranchi – 834 002, Jharkhand, India

For Enquiry Contact

Dy. General Manager, I/C (Corporate Services)

Phone :- +91-651-2481026

Fax :- +91-651-2482214 /2482189

e-mail :- pro@meconlimited.co.in

MAJOR OFFICES

City	Phone	Fax	e-mail
Bangalore	+91-80-26252000	+91-80-26576352	bangalore@meconlimited.co.in
Delhi	+91-11-22041872	+91-11-22041214	delhi@meconlimited.co.in
Navi Mumbai	+91-22-27812155-58	+91-22-27812275	mumbai@meconlimited.co.in
Chennai	+91-44-26184873	+91-44-26184874	chennai@meconlimited.co.in
Kolkata	+91-33-22822381-82	+91-33-22824441	kolkata@meconlimited.co.in